

Phenotyping: Osteoporosis Panel

Charles River Laboratories Transgenic Services provides a variety of therapeutic phenotyping panels to assist with characterizing your unique models.

Our Osteoporosis Panel includes:

Basic Characterization

• *PhenoFirstSM Panel*

PhenoFirstSM includes *in vivo* evaluation, basic pathology, and basic clinical pathology. This panel targets organs of the thyroid and parathyroid glands, sternum, stifle joint, vertebrae, and femur.

The minimum recommended sample size is three homozygous or knockout mice and three wild type controls that are age, sex, health status, and genetic background matched.

Additional Characterization

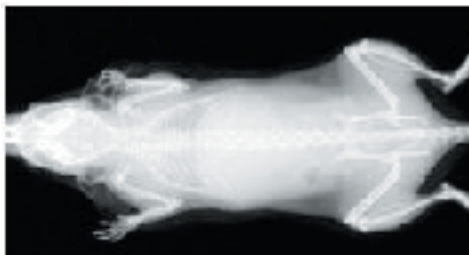
• *Body Composition Assessment*

A Dexascan is performed to determine percent total body fat, total bone mineral density, and total bone mineral concentration. In addition, bone mineral density and concentration are analyzed in two focal regions of interest: the spine and femur.

The minimum recommended sample size is 10 homozygous or knockout mice and 10 wild type controls that are age, sex, health status, and genetic background matched.

• *Disease Progression Study*

A breeding colony is set up at Charles River Laboratories to produce mice for a temporal body composition study. Monthly body composition measurements begin at ten weeks of age for all offspring. The data generated is used to characterize disease progression.



Radiograph of a mouse

The minimum recommended sample size is five breeding pairs that produce sufficient litters to generate 10 homozygous or knockout mice and 10 wild type controls that are age, sex, health status, and genetic background matched.

• *Rodent Multi-Analyte Profiles*

Each animal is screened for 60 plasma biomarker levels.

The minimum recommended sample size is five homozygous or knockout mice and five wild type controls that are age, sex, health status, and genetic background matched.

Customized Characterization

We recognize that research goals vary. Our team of laboratory animal professionals is available to customize a model characterization plan that meets individual needs and helps you achieve your goals more efficiently.

Available Panels

Please click [here](#) to view a complete list of available panels.

For more information, please call 1.877.CRIVER.1 or e-mail askcrl@crl.com.


CHARLES RIVER
LABORATORIES
1-877-CRIVER-1 • www.criver.com